

MAX STRUCTURES

With Absolute Precision

A Code Tech International Vertical

Offshore Structures

Tekla Structures

Onshore Structures

3D Modeling

Skid Assemblies

Steel Detailing

Plants & Buildings

FEA on ANSYS

www.maxstructures.com



About Us

Established in 2019, Max Structures is a **Code Tech International** vertical, specializing in the 3D Modeling and Steel Detailing of all types of steel structures using the **Tekla Structures** software.

We provide clients with cost-effective, timely and absolutely precise **Fabrication / Shop Drawings** (Single-part, Assembly, Erection and General Arrangement), along with the **Bill of Quantities (BOQ)**, for steel construction projects, as per various engineering standards.

Through our parent company we also offer Structural Analysis on **STAAD.Pro**, Steel Connection Design on **RAM Connection**, Foundation Design on **Foundation Advanced** as well as services on BricsCAD, CADWorx, CAESAR II, PV-Elite, Autodesk Inventor and Ansys Mechanical Enterprise.

From offshore structures to onshore ones and from industrial buildings to commercial ones, we are the **one-stop solution centre** for all your steel structures related engineering requirements.

Mission Statement

We at Max Structures commit ourselves to designing with absolute precision, without cutting any corners and down to the very finest detail, every single project that is entrusted to us.

Our Vision

By nurturing a team of passionate designers to deliver even on our clients' most challenging projects, we aspire to become *the* global one-stop solution centre in structural engineering.

Why Choose Us



Absolute Precision



Competitive Prices



Licensed Softwares



Designing as per Standards



On-time Submissions



No Cutting Corners



Experienced Professionals



Personal Attention



Industry-wide Services









One-stop Solution Center

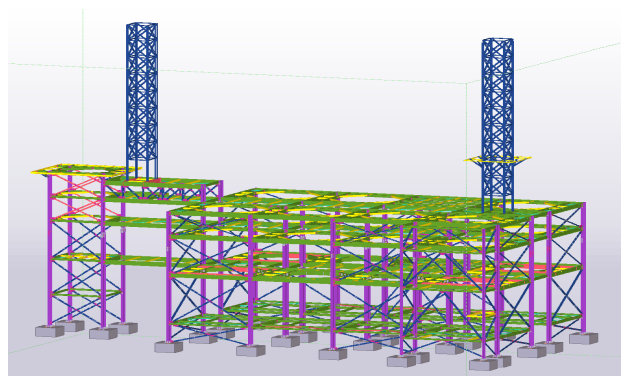
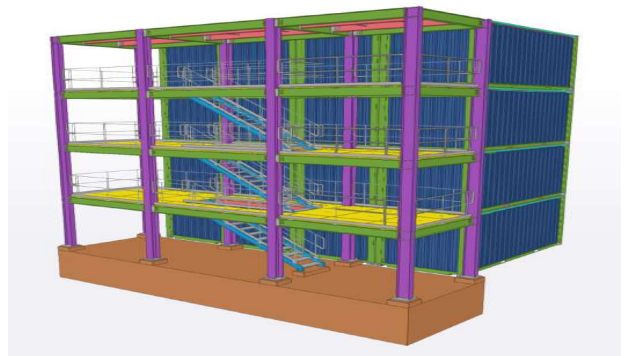
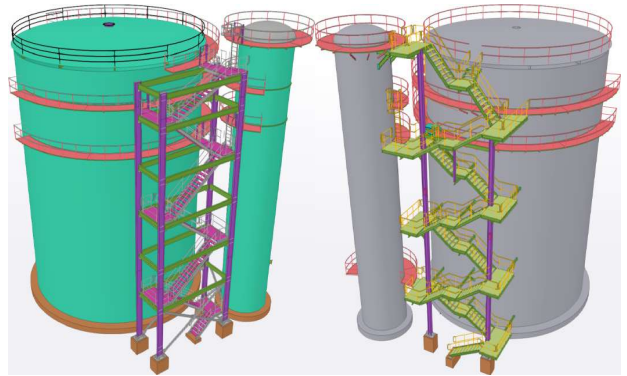
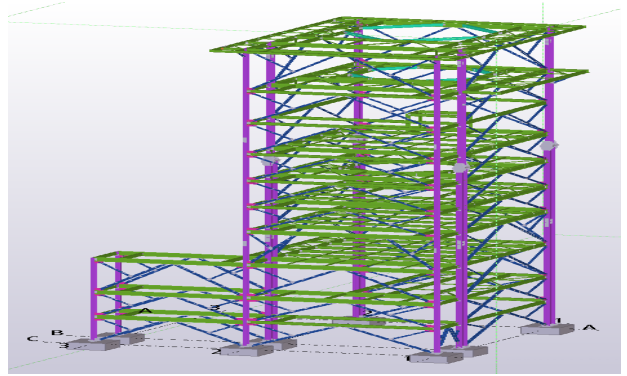
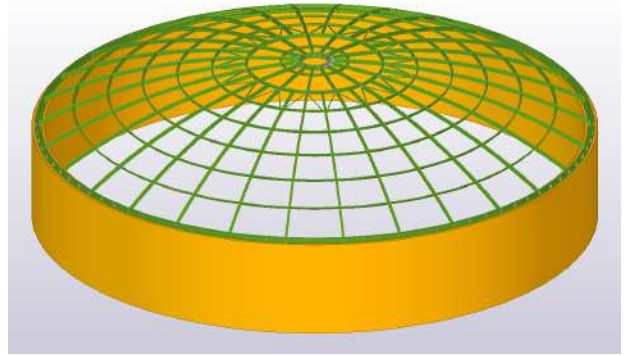
Our Services

Using Tekla Structures we provide 3D-modeling and detailing services for the following and more :

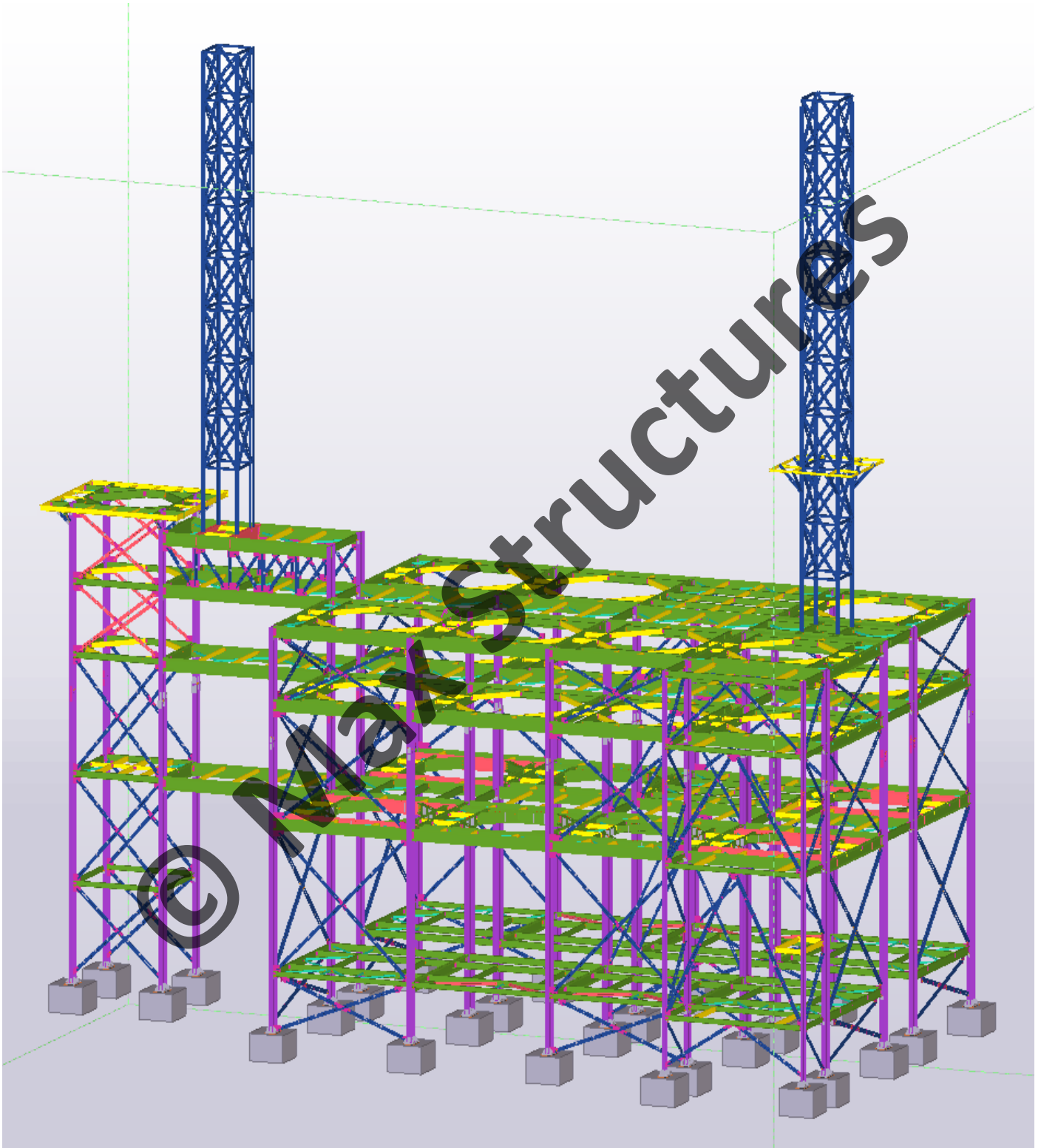
-  **Commercial Buildings**
-  **Industrial Buildings**
-  **Process Plants**
-  **Equipment Support Structures**
-  **Factory Sheds**
-  **Storage Tank Domes**
-  **Pre-Engineered Buildings (PEBs)**
-  **Long-span Roof Structures**
-  **Offshore Platforms**
-  **Pipe Racks**
-  **Skid Assemblies**
-  **Transmission Towers**
-  **Communication Towers**
-  **Steel Staircases**

And through Code Tech International we also undertake assignments of the following types :

-  **FEA on ANSYS Mechanical Enterprise**
-  **Structural Analysis on STAAD.Pro**
-  **Steel Connection and Foundation Design**
-  **3D Modeling (incl. piping) on CADWorx**
-  **Pipe Stress Analysis on CAESAR II**
-  **Static Equipment Design and Analysis**



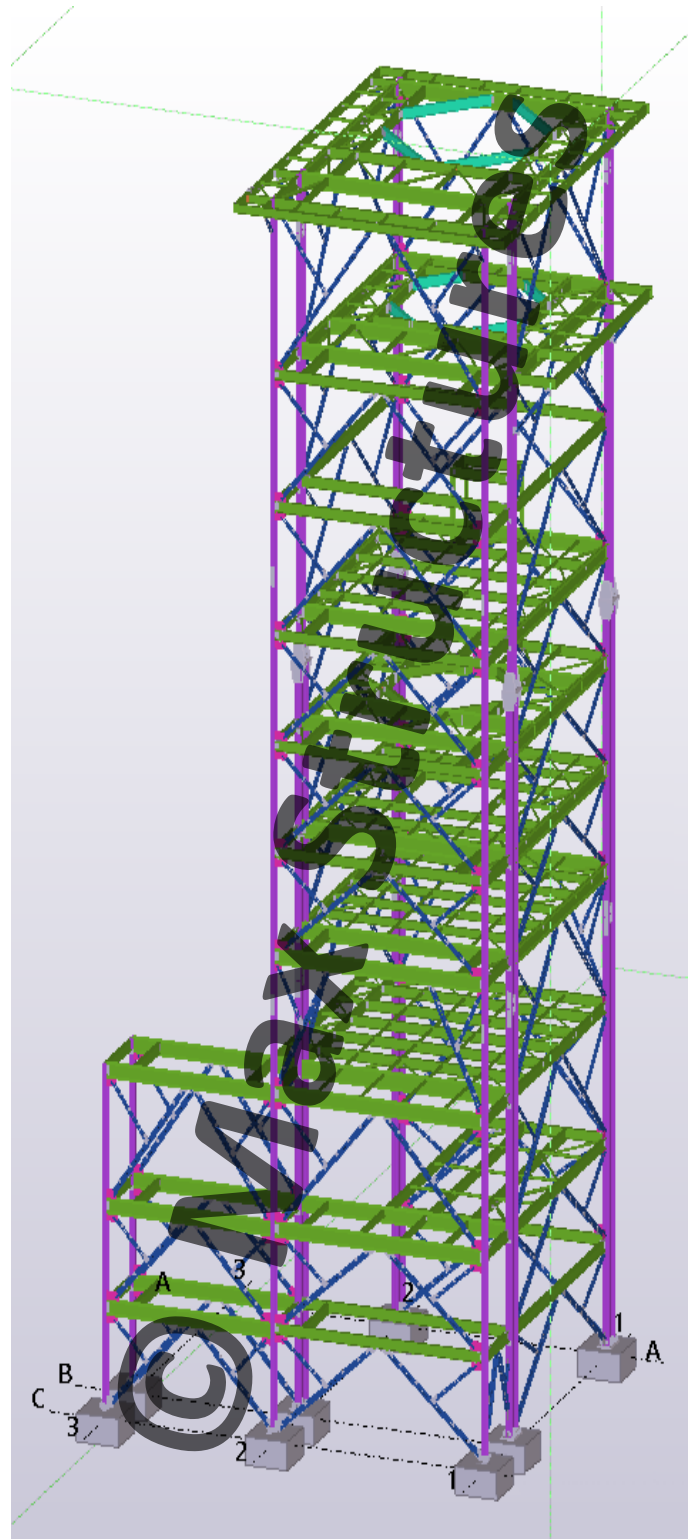
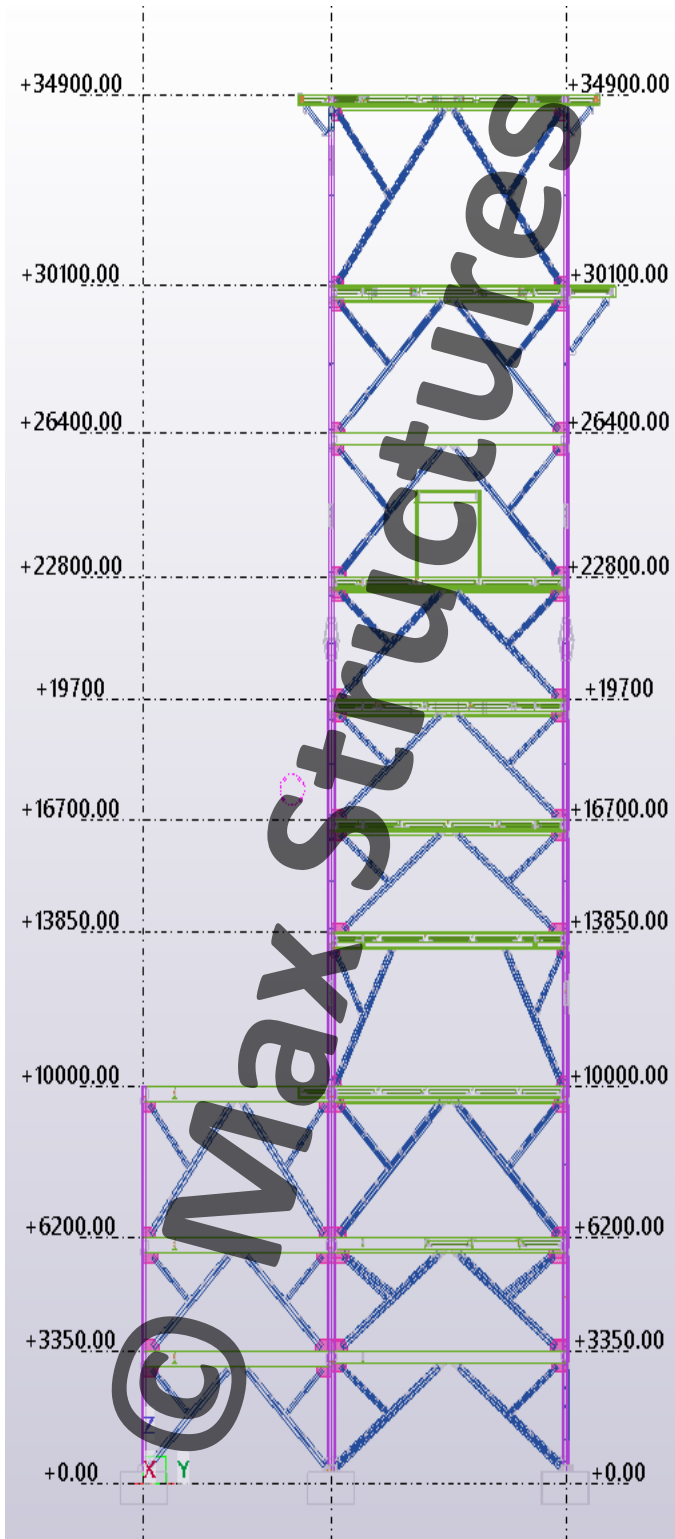
Mounting Structure Complex



Scope of Work : 3D Modeling and Steel Detailing on Tekla Structures

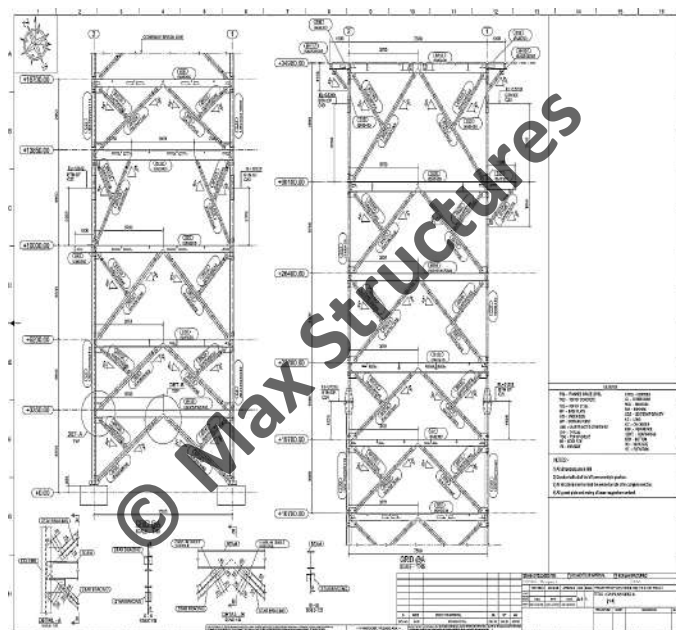
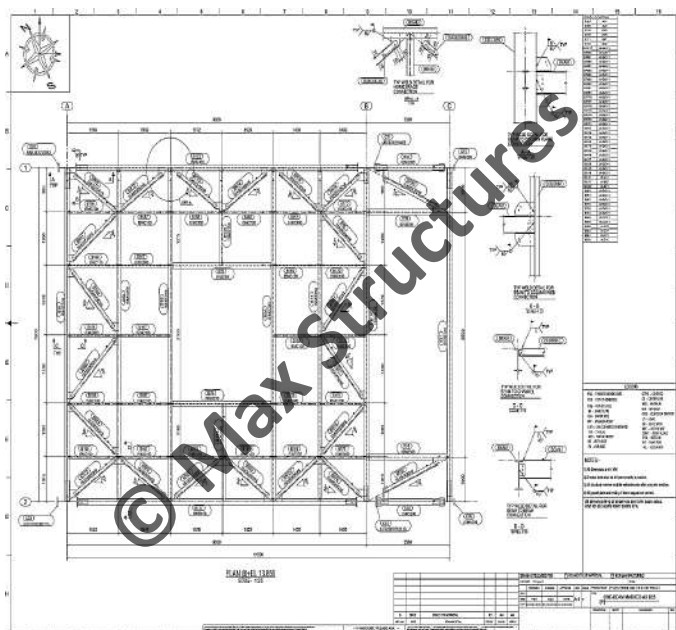
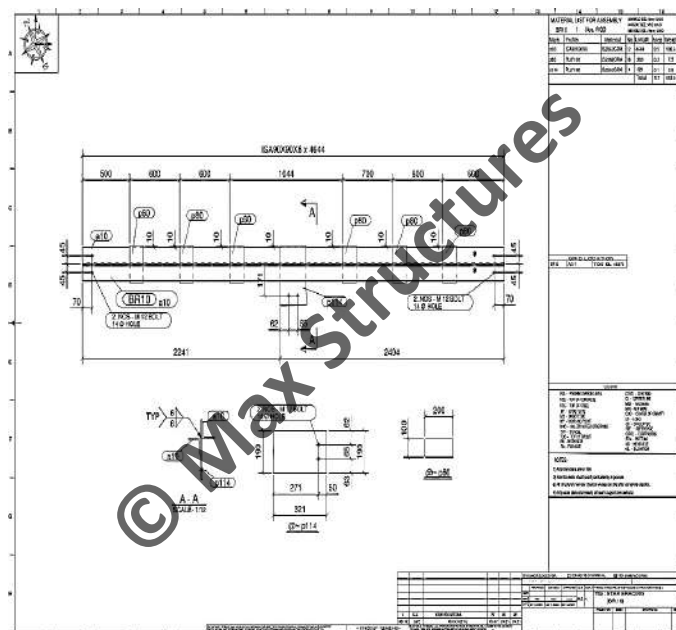
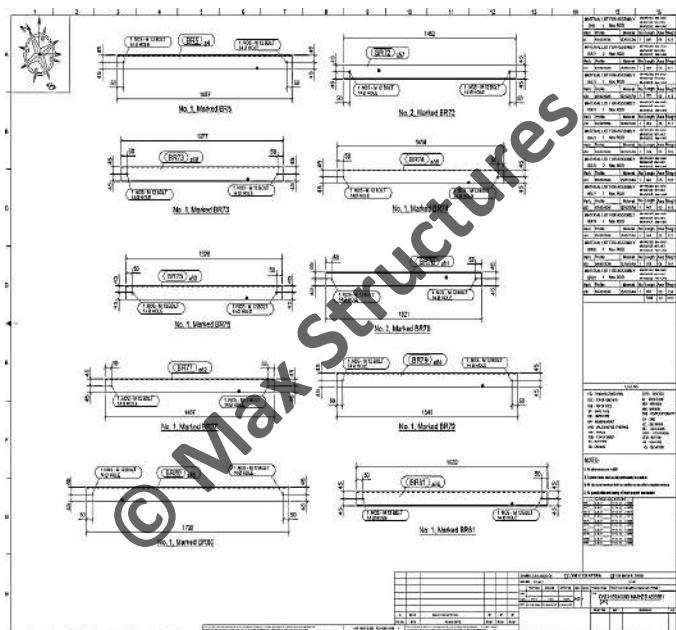
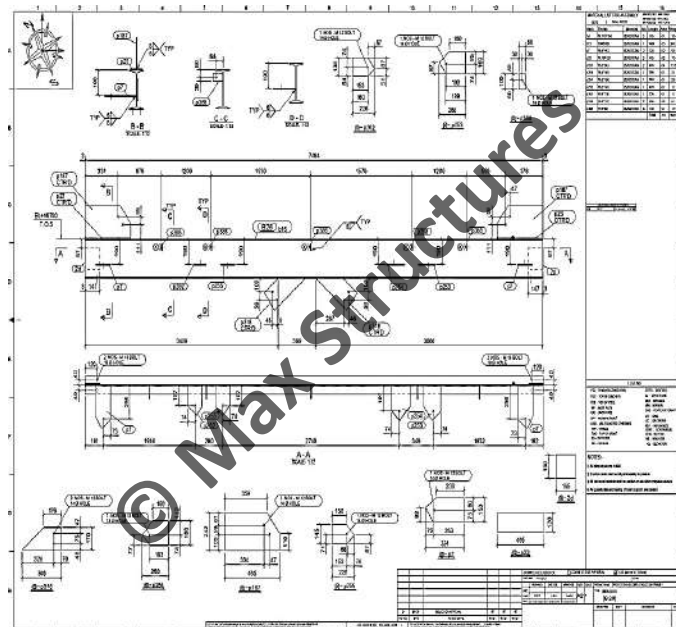
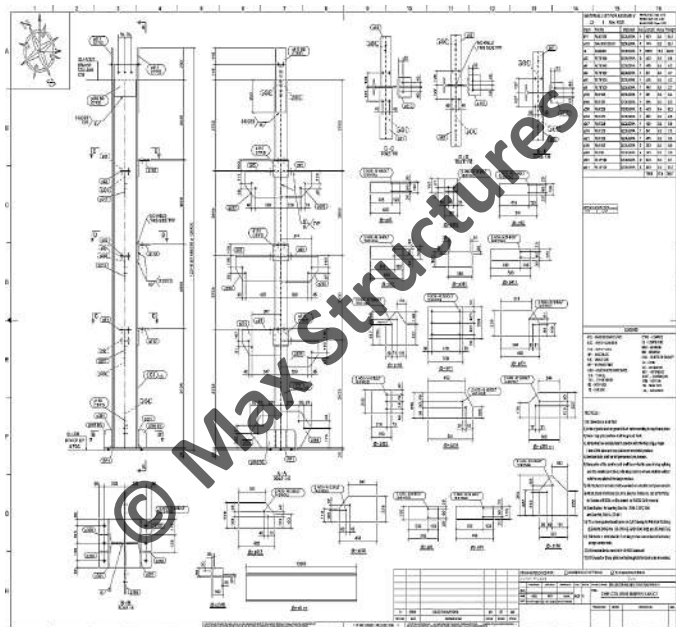
MOC : IS 2062 Gr.A

10 Floor Pelletizer Building

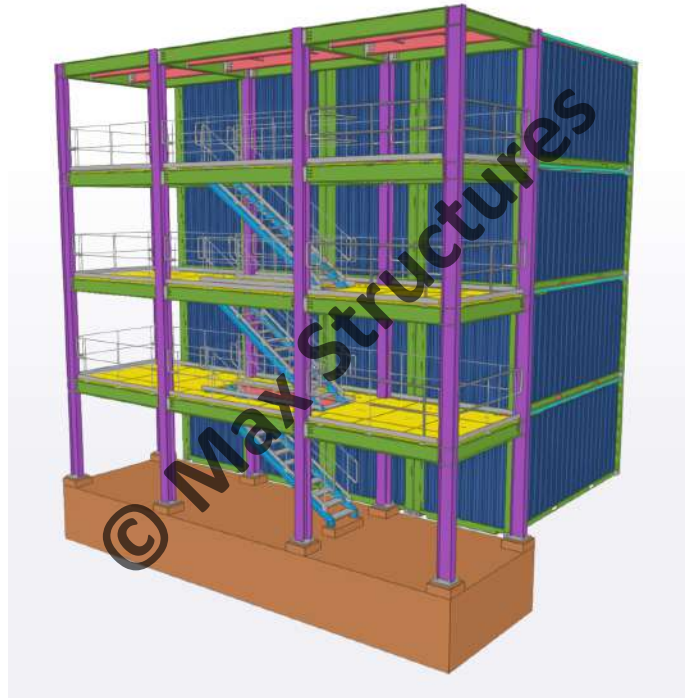
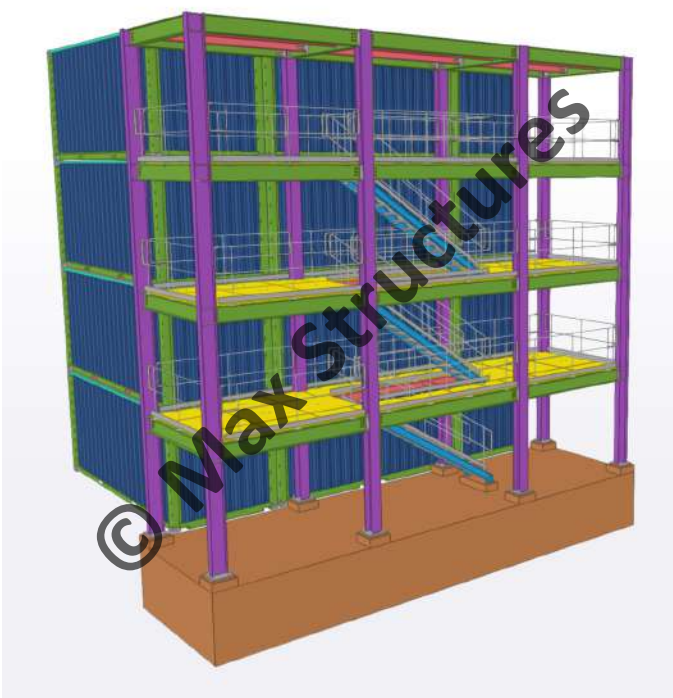


Scope of Work : 3D Modeling and Steel Detailing on Tekla Structures

Height : 34 m

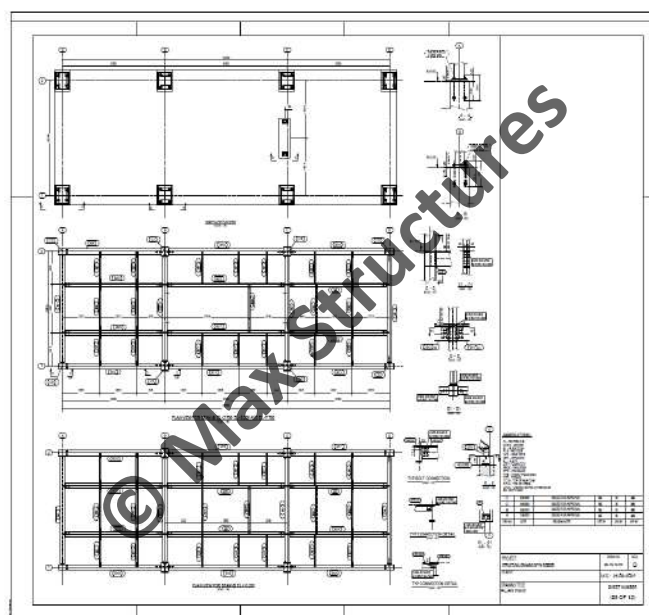
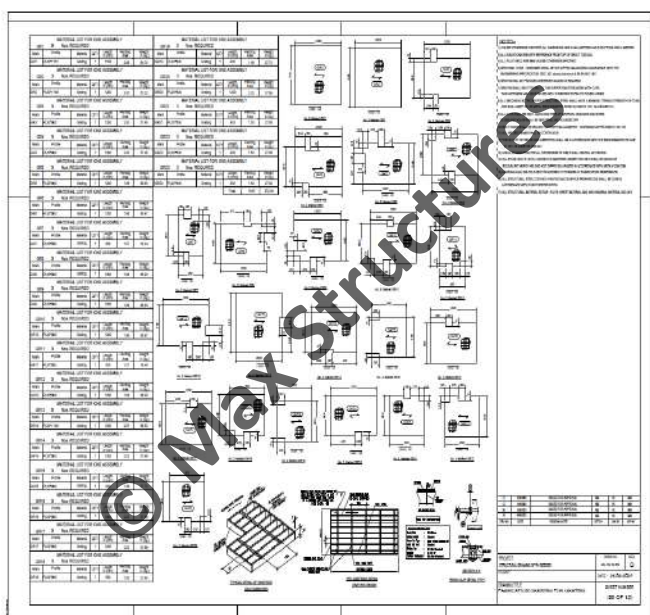
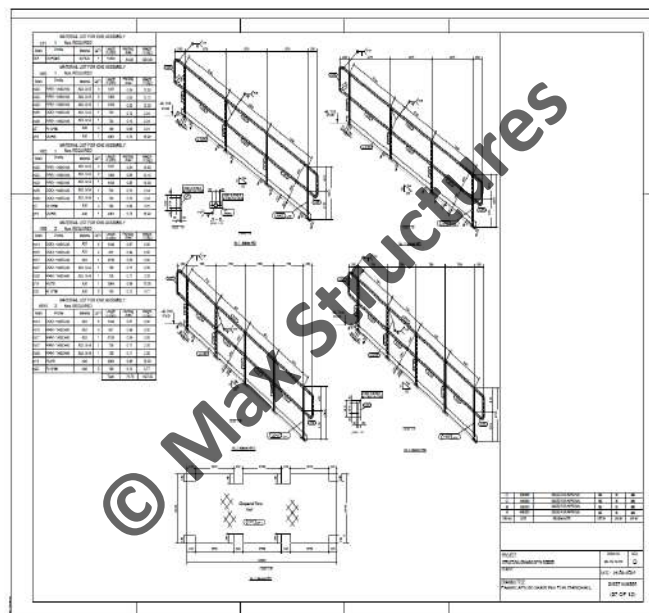
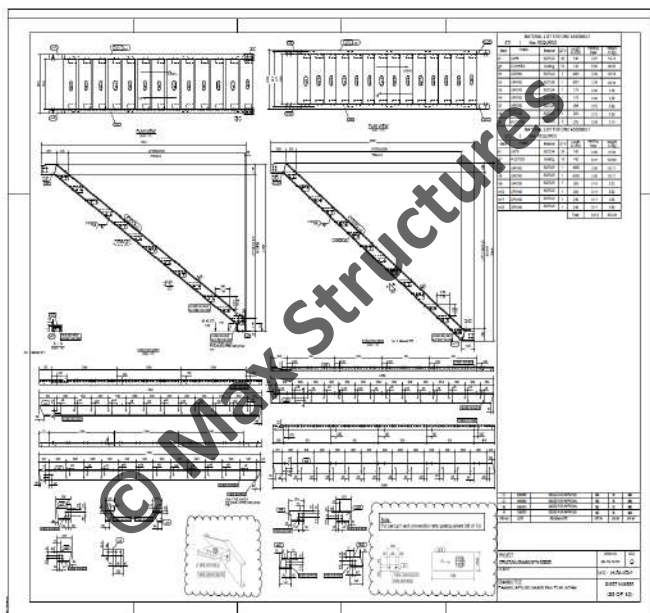
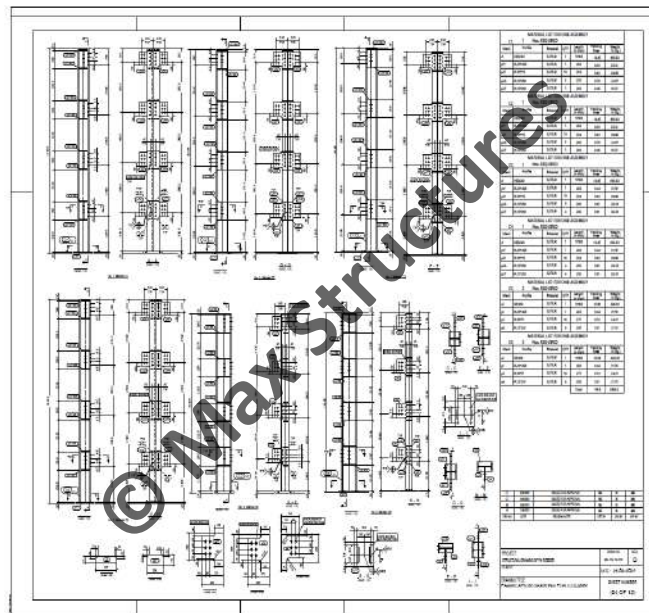
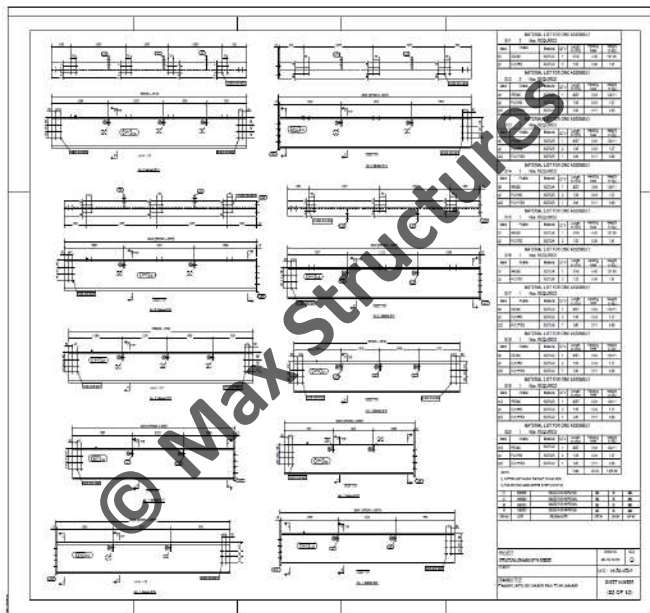


Reefer Structure



Scope of Work :

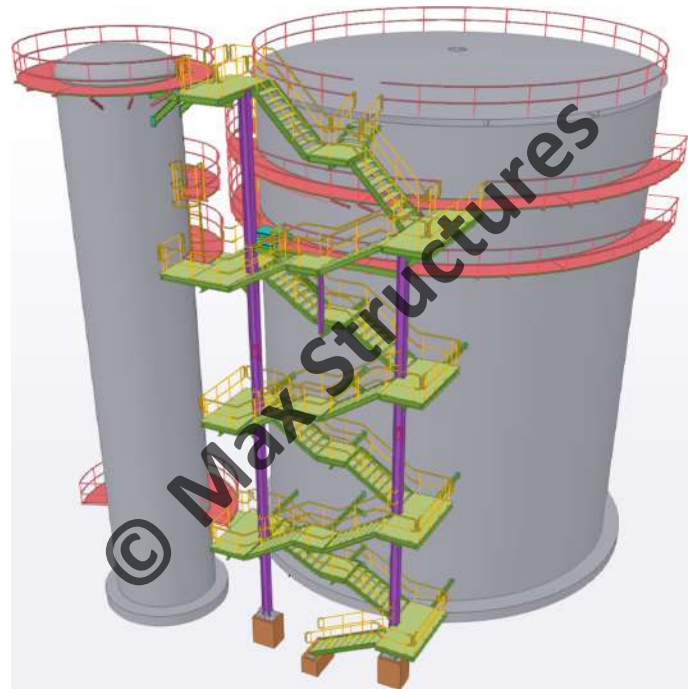
- 3D Modeling and Steel Detailing on Tekla Structures
- Structural Analysis on STAAD.Pro



20 m Standalone Steel Staircase

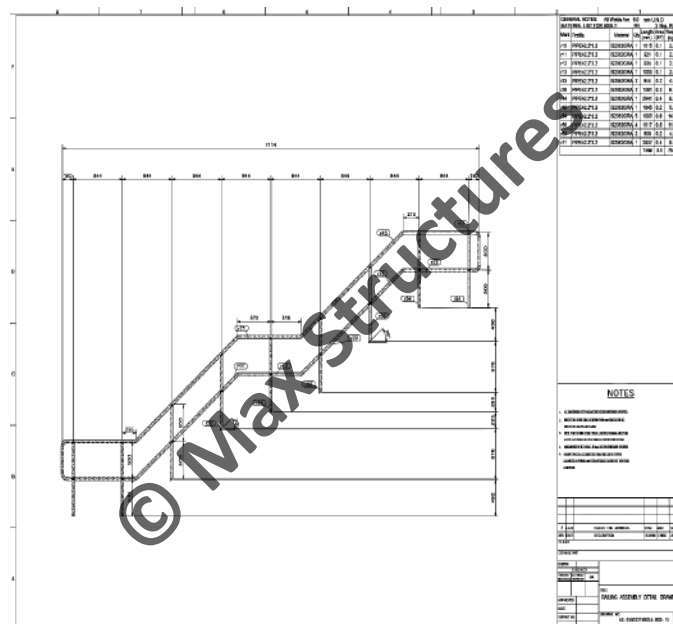
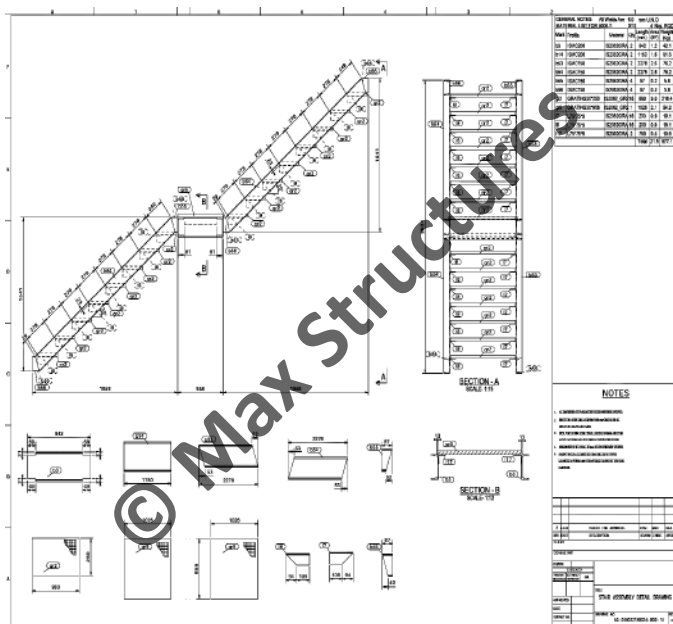
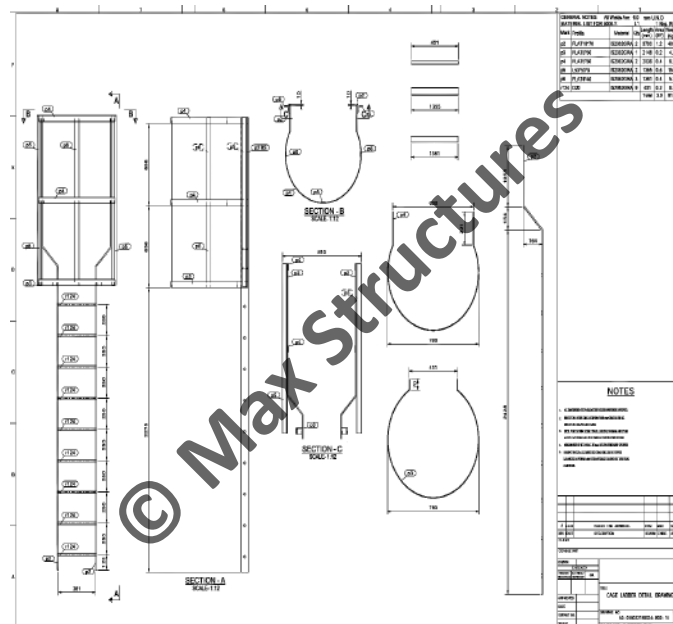
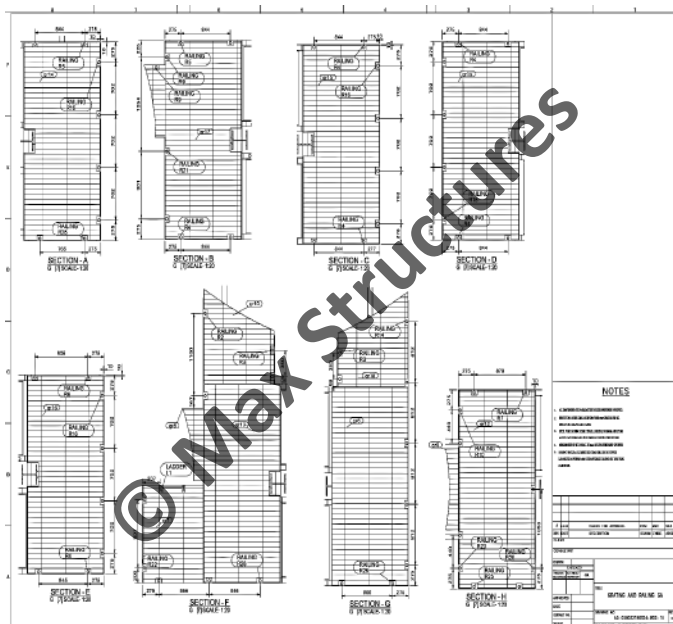
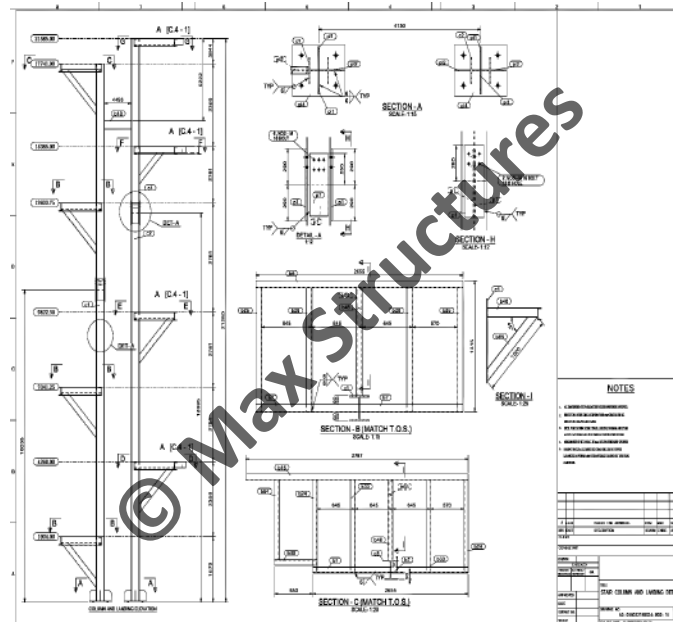
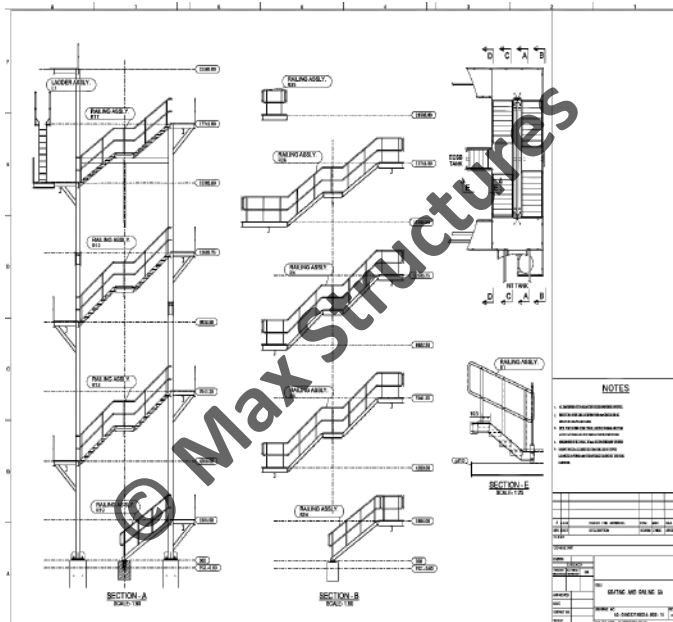


22 m Supported Steel Staircase

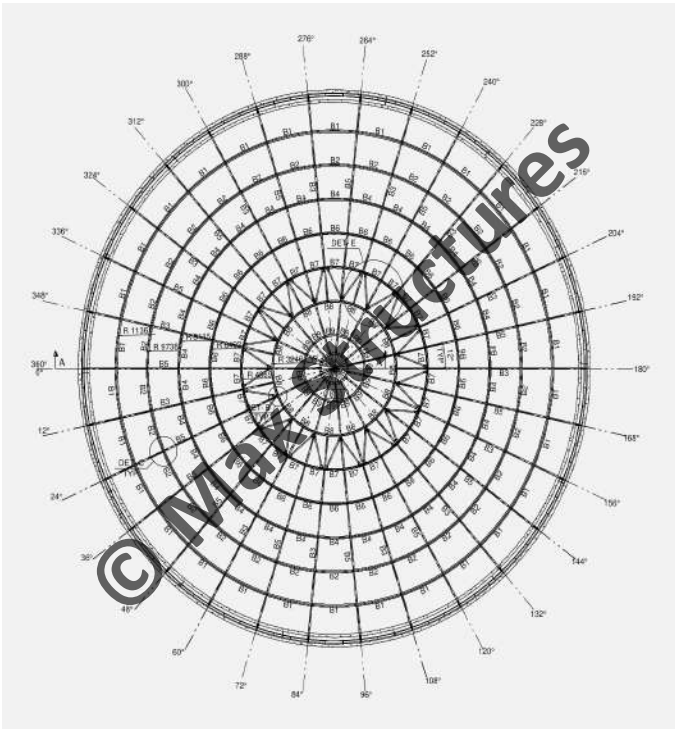


Scope of Work :

- 3D Modeling and Steel Detailing on Tekla Structures
- Structural Analysis on STAAD.Pro



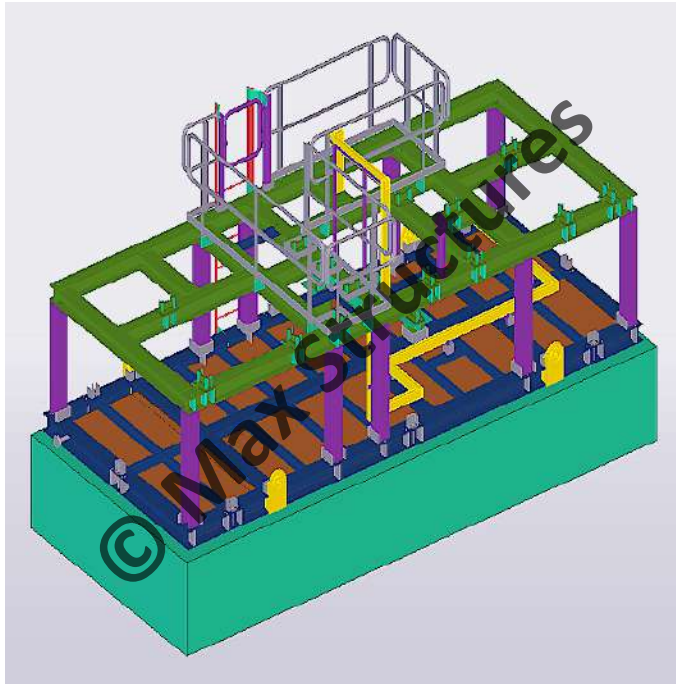
Steel Domed Roof



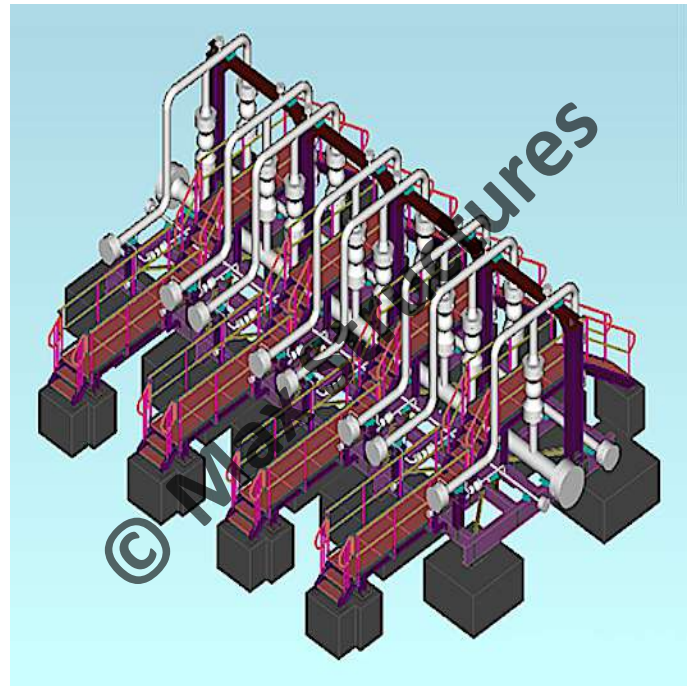
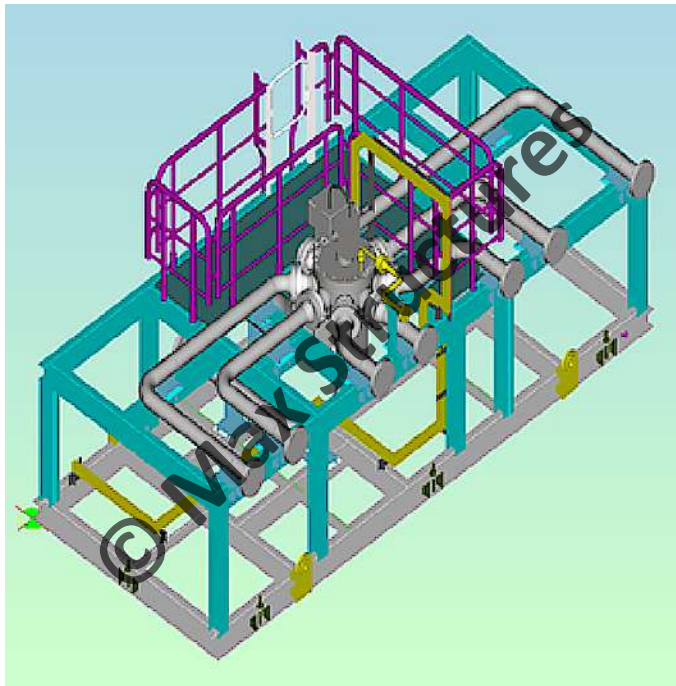
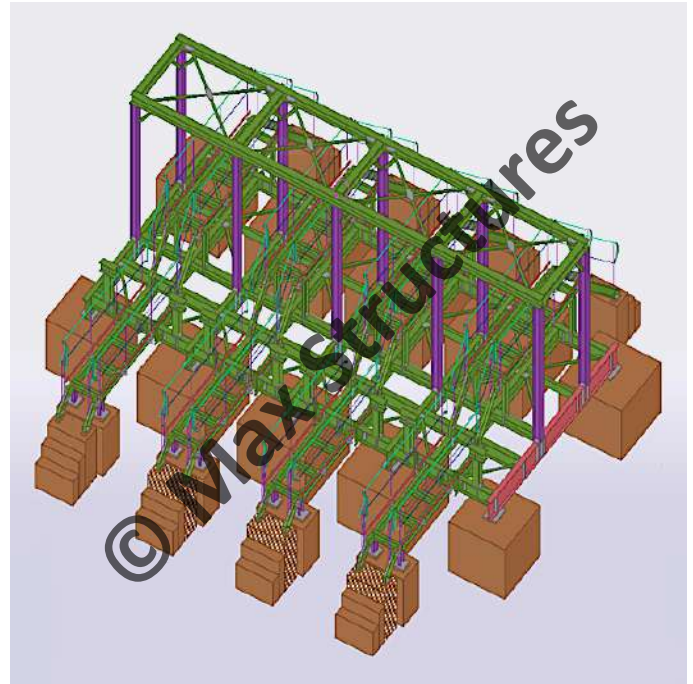
Scope of Work :

- 3D Modeling and Steel Detailing on Tekla Structures
- Structural Analysis on STAAD.Pro

Multi Selector Manifold Skid



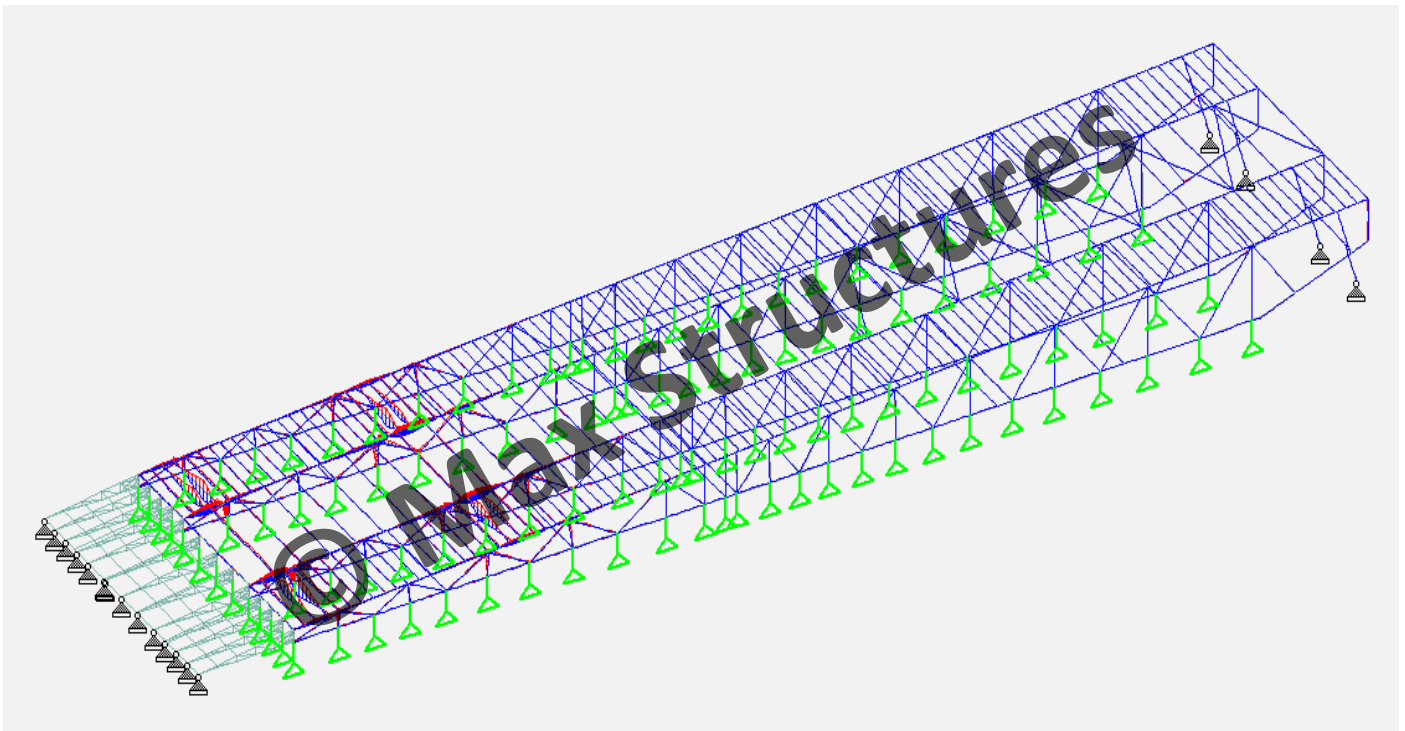
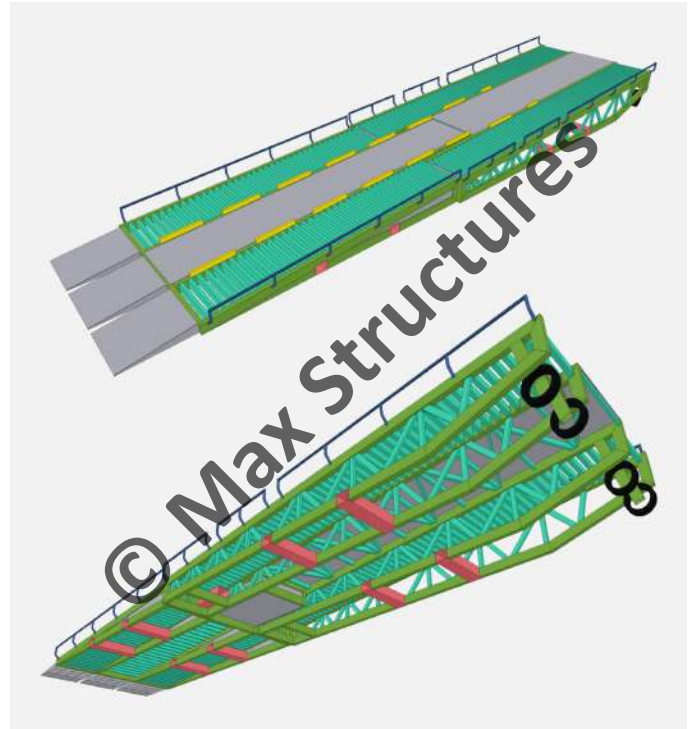
Remote Station Manifold Skid



Scope of Work :

- Complete Package Design, Structural Analysis on STAAD.Pro and Detailing
- Piping 3D-modeling, Isometric Drawing and Stress Analysis

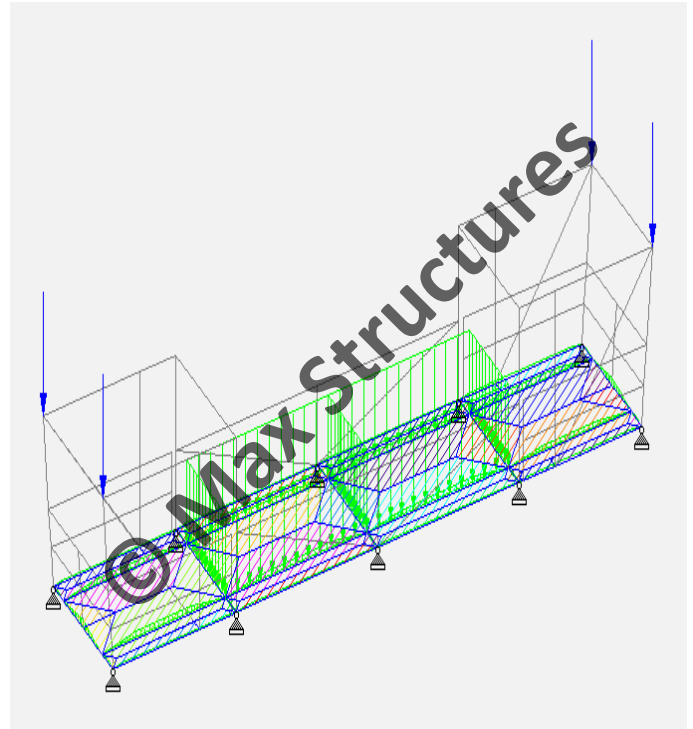
20 Metre Loading Ramp



Scope of Work :

- 3D Modeling and Steel Detailing on Tekla Structures
- Structural Analysis on STAAD.Pro

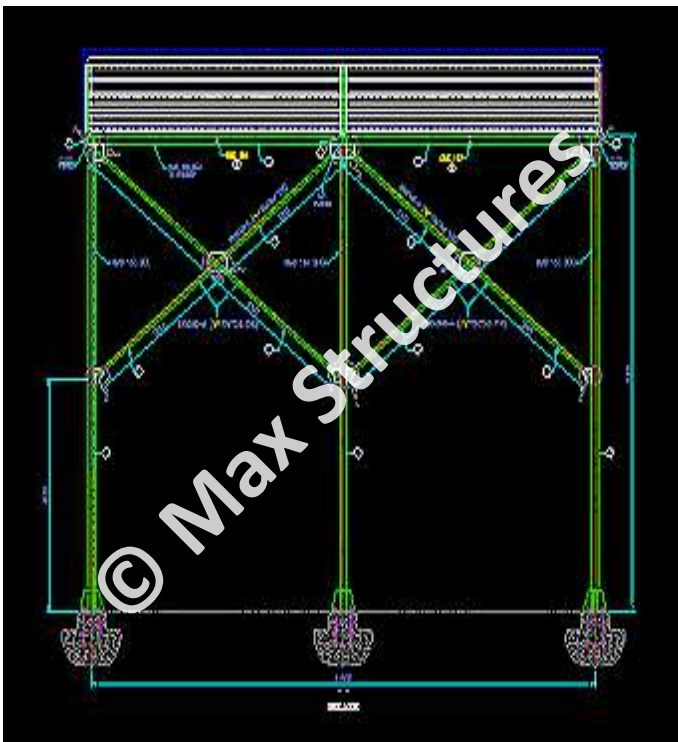
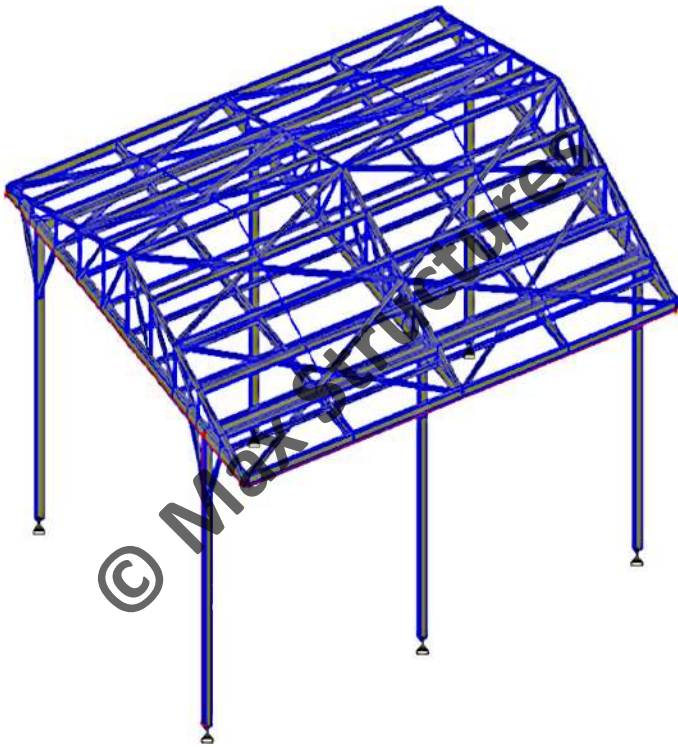
Manlift Cage (20 + 40 ft. Baskets)



Scope of Work :

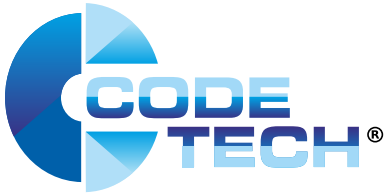
- 3D Modeling and Steel Detailing on Tekla Structures
- Structural Analysis on STAAD.Pro

Industrial Sheds



Scope of Work :

- Design and Detail Engineering
- Structural Analysis on STAAD.Pro



Since its inception in 2009, Code Tech International has delivered on numerous key projects the world over. Our intermediate and end clients include **Aramco**,


ADNOC, **Frames**, **GASCO**, **Kia**, **Petrofac**, **Saipem**, **Siemens** and **Technip** to name a few.


With **Max Structures**, founder and director, **M.A. Khan** aims to further realize his vision of a one-stop engineering solutions center by now delivering Code Tech's redoubtable structural engineering services using Tekla Structures also.




Contact Us





 www.maxstructures.com

 info@maxstructures.com



 +91 20 40621810

 +91 9970921382

 Office No. 1, Second Floor, C1 Block, Bramha Estate Commercial Premises,
Near Jyoti Restaurant, Kondhwa Khurd, Pune - 411048, Maharashtra, INDIA.